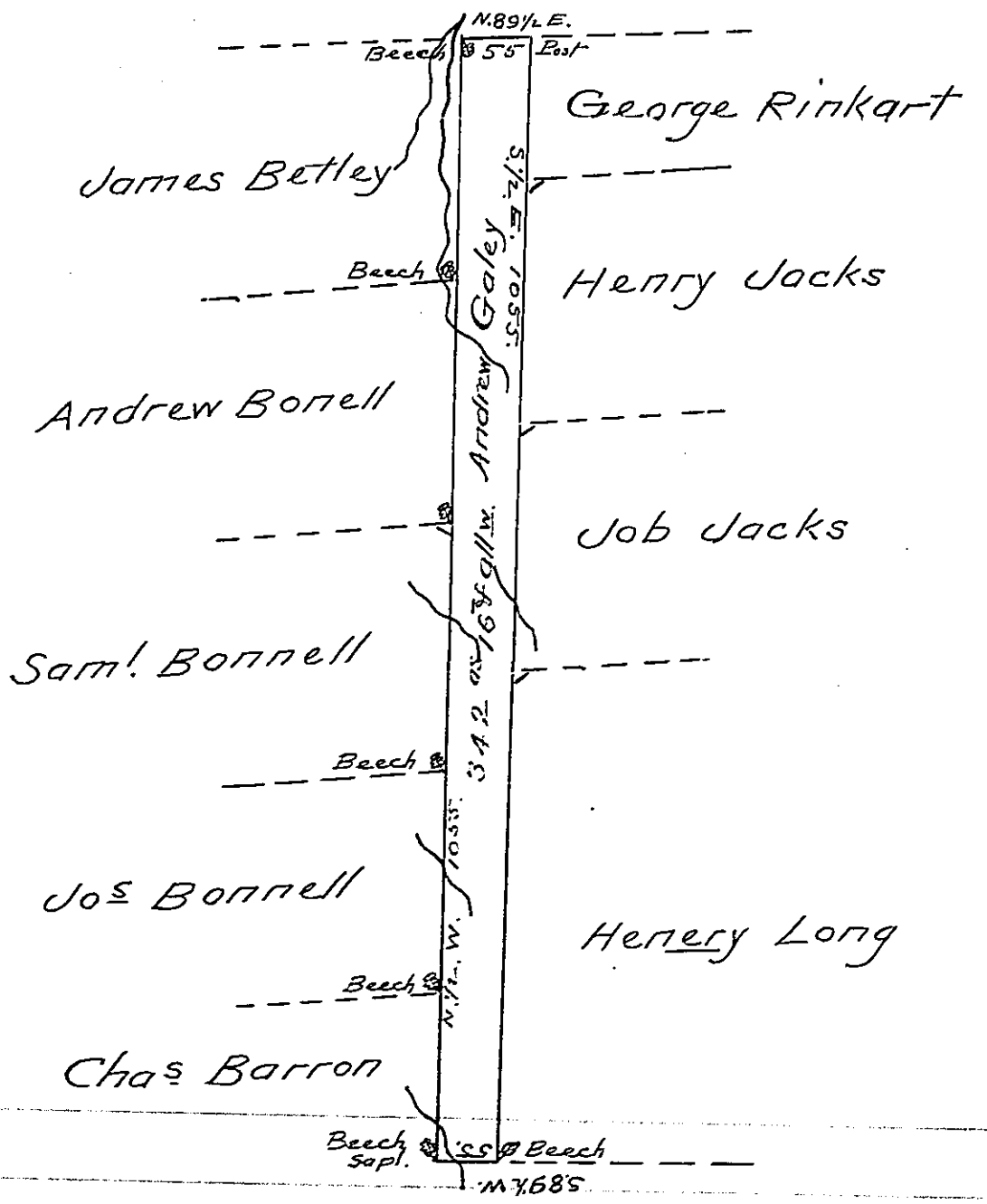


Jo<sup>s</sup> Bentley



A Draught of a tract of land called —  
 Situate in the County of Luzerne, adjoining Jo-  
 seph Bentley & others, surveyed the 17<sup>th</sup> day of  
 Novem<sup>r</sup> 1792 for Andrew Galey, in pursuance  
 of a warrant bearing date the 3<sup>d</sup> day of April  
 1792 Containing three hundred forty two acres,  
 & sixteen perch<sup>s</sup> & the allowance of six Per. Cent.

To Danl Brodhead Esq<sup>r</sup> } Ant<sup>y</sup>. Crothers D.S.  
 Surveyor General }

IN TESTIMONY that the above is a copy of the original remaining on file in  
 the Department of Internal Affairs of Pennsylvania, made  
 conformably to an Act of Assembly approved the 16th day of  
 February, 1833, I have hereunto set my Hand and caused  
 the Seal of said Department to be affixed at Harrisburg,  
 this Twenty first day of October 1904.

*Joseph R. Brown*  
 Secretary of Internal Affairs.